



Annual Report

2022-2023

Contents

03	Our Mission, Vision & Values	20	2023 By the Numbers
04	About St Pat's	22	St Pat's Community Centre
05	Housing First	22	St Pat's Support Services
06	Our Strategic Goals	28	St Pat's Housing
07	Measuring our Impact	32	Aboriginal Services
08	CEO Report	34	Imagined Futures
10	Chairperson's Report	36	St Pat's Community Store
12	50 Years of St Pat's	37	St Pat's Op Shops
14	Our Staff	38	Community in Action
16	Our Volunteers	39	Donors
18	Awards	40	Finances
		42	Looking Forward

01 **Front Cover**

St Pat's My Home project was completed in June, providing 18 new homes for women over 55.

Our Vision, Mission and Values

Our Vision

A community where people live securely and reach their potential.

Our Mission

To lead bold action in our community to reach our ultimate goal to end chronic homelessness.

Our Values

Leadership

Enabling our people to take bold action to address complex social issues.

Dignity

People feel respected and empowered.

Justice

Everyone is treated equitably, with honesty and fairness.

Hospitality

People feel welcome, secure and valued.

Acknowledgment of Country

St Patrick's Community Support Centre acknowledges the traditional custodians on whose land we operate, and we pay our respects to Elders past and present. We respect and value the contribution and knowledge they bring to our service and community.



About St Pat's

St Patrick's Community Support Centre (St Pat's) is a not-for-profit specialist homelessness support service and community housing provider which has been working side-by-side with vulnerable people in the south metropolitan region of Perth for 50 years.

To achieve our mission to end chronic homelessness we work in partnership with government and human services agencies, businesses, and the broader community, to provide a range of high-quality services delivered to break the cycle of poverty and disadvantage, including housing, health, crisis intervention and emergency relief, social inclusion and specialist support services. Our collaborative, integrated and person-centric approach allows us to be there for people at every stage of their journey out of homelessness.



Housing First

St Pat's are committed to a Housing First approach to ending chronic homelessness that centres on connecting with people that are facing rough sleeping, providing tailored support for as long as required and assisting them into appropriate, stable and secure housing as a first step.

The Housing First model has proven both locally and internationally to successfully end chronic homelessness.

As the name suggests, it is based on the principle that people need to first have a safe, appropriate place to live before they can tackle the personal, or systemic, barriers which may prevent them from settling into and maintaining their home for the long term.



Our Strategic Goals

1 Educate

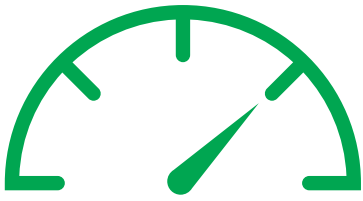
Educate the community about the real causes of homelessness and their solutions.

2 Facilitate

Facilitate a service system across Western Australia, and particularly in the south metropolitan region, that ends chronic homelessness through addressing its complex causes.

3 Build

Build the capacity and capability of the organisation to respond to its changing environment.



Measuring our Impact

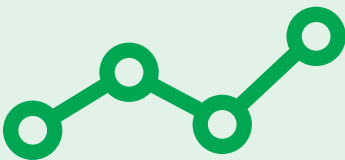
St Pat's implemented a new Impact Measurement Plan in 2022, so that we can better understand the difference our services and programs are having on people's lives.

While the immediate effect of what we do is often easy to see, with our new framework adopted across all areas of the organization we will be able to track the long-term outcomes of our work, ensuring we're working effectively to meet our ultimate goal to end chronic homelessness in our community.

St Pat's supplemented existing data with surveys for clients, staff and external stakeholders, to create a baseline to measure changes in impact in future years.

Key findings from our first Impact Measurement Report are:

- The people we support overwhelmingly reported positive outcomes from the work we do and nearly all clients agreed that they are treated with dignity, respect and are in a better situation because of the work St Pat's does.
- External stakeholders were equally positive, with all agreeing St Pat's does a good job of providing services and supports that increase clients wellbeing, support people to be part of the community and work well with other service providers.
- Areas where we will be focusing on improvement during the next 12 months include developing our staff to be leaders, with the tools and support they need to continue providing the high quality service to people in our community.



Our Benchmarks

- St Pat's contributes to people having the practical resources and personal skills they need to successfully manage their lives.
- St Pat's contributes to creating a community where people are well - physically, spiritually and mentally.
- St Pat's fosters people's participation in, contribution to, and value by the community.



St Pat's received the keys to 18 new homes for women over 55 in June

CEO Report



By Michael Piu
Chief Executive Officer

In December 2022, with the worst of the pandemic finally behind us, St Pat's was delighted to be able to pause and celebrate a major milestone in our history – 50 years of providing essential services and support for people experiencing homelessness!

This rare opportunity allowed us to look back on all we've achieved and acknowledge the work of our founder Brother Ignatius Hannick, and all the wonderful volunteers and staff who have served St Pat's over its 50 years. We also took the time to look forward, to a future where any experience of homelessness is rare, brief, and a one-time occurrence.

Very aptly in our 50th anniversary year, we have been busy with a number of important projects designed to advance our work towards ending chronic homelessness in our community.

This included enhancing and expanding our service delivery for communities facing particular needs. Tragically, First Nations Peoples are well over-represented amongst those facing homelessness. We were deeply appreciative and honoured, therefore, to be one of the recipients of financial support from the Estate of the late Sonya Rodgers, allowing us to support a groundbreaking model of service delivery by and for Aboriginal People. This service, Djenabidet Kaleep (Footpath Home), is auspiced within St Pat's, but led by a committee of Elders and a Senior Leader in our team, Pauline Boscato, a Noongar Whadjuk-Yued woman, along with an entirely Aboriginal team of Peer Navigators, Health and Outreach workers.

We were also delighted to partner with the City of Kwinana, along with consortium members, to expand our HEART assertive outreach service to the Kwinana community and look forward to the positive outcomes that partnership will deliver.

At the centre of our work is the internationally evidence-based "Housing First" approach, which, as the name suggests, makes the first priority the securing of a stable and appropriate home for a person as soon as possible after they experience homelessness, alongside tailored supports meeting their needs, for as long as they may require them.



Michael accepted the national HESTA Award for Outstanding Community Service Organisation which was awarded to St Pat's in November.

The adoption of Housing First principles by St Pat's has been a key factor leading to the development of our new Housing Strategy, which we have already made significant progress in advancing, particularly with the opening of our Congdon Street, North Fremantle housing providing 18 homes for women over 55 experiencing homelessness. This was developed by our partners at "My Home Australasia", along with generous funding support from Lotterywest, the Minderoo Foundation, and the Sisters of St John of God, the provision of land by the WA State Government through the Department of Communities, and a range of other generous community supporters such as Rotary WA and the Catholic Women's League of WA.

We also announced a partnership with the State Government to develop 8 new townhouses in Orelia which will provide long term housing for women, and families, who are exiting homelessness.

A key aspect of our program is the redevelopment of our existing facilities in Fremantle, with plans in place to deliver new and expanded fit-for-purpose community centre and service delivery facilities, along with 28 brand new self-contained apartments providing long term housing for people exiting chronic homelessness. We were delighted to have secured Development Approval for the project

during the year, and progress has already been made towards raising the \$22m required to undertake this project. Indeed, at the end of June, a public appeal was launched to raise the remaining \$5m required.

Unfortunately, in the midst of important work being done, it must be recognised that the pandemic, and the geopolitical issues that have followed in its wake, have had significant social and economic impacts on our community. Not only is demand for support at an all-time high, but we are seeing more "new faces" of homelessness, including low-income working individuals and families. The challenge for organisations like St Pat's currently is to do our best to meet the need we are seeing as effectively as we can within our capacity, whilst staying the course in the longer-term work towards reducing and ending chronic homelessness in our community.

I am sure that when Br Hannick established our organisation just over 50 years ago, his hope would be there would no longer be a need for us by 2022. Sadly, this is far from the case, however we must remain as determined and focused as ever to reach that goal; as in a prosperous nation like Australia, there is no reason why chronic homelessness should exist.



Dr Colgan led celebrations of St Pat's 50th Anniversary in December.

Chairperson's Report



Dr Pat Colgan
Chairperson

It is not often that a chairperson has the opportunity to review a year as successful as 2023 has been for St Patrick's Community Support Centre.

To best support this assessment, I go to the external judgement of substantive others:

- Hesta Excellence Awards 2022
Outstanding Community Service Organisation
- Institute of Public Administration
WA-Not-for-Profit
Leader of the year 2022

This outstanding award was presented to our truly deserving CEO Mr Michael Piu.

While basking in this success relating to 2022 we continued to power into 2023 with the placement of 18 women experiencing homelessness into their new long term accommodation located in North Fremantle. This innovative project was developed by our partners at "My Home Australasia", along with generous funding support from Lotterywest, the Minderoo Foundation, and the Sisters of St John of God, the provision of land by the WA State Government through the Department of Communities, and a range of other generous community supporters such as Rotary WA and the Catholic Women's League of WA.

As this project moved into operation, the reality of the major redevelopment of St Pat's owned and managed properties on Queen Victoria and Beach Streets moved into high gear.

With development approval granted, a skillful Development Committee established and essential fund raising activities taking on a professional stance under the guidance of Leo Crohan and patronage of The Hon Wayne Martin AC.

Hopefully all these activities will come together enabling a mid- 2024 start to this exciting project.

Based on substantial input from the St Pat's team, the Board endorsed a new Housing Strategy focusing on access to "safe and secure appropriate housing" which aligns closely with the WA State Government's 10 year Homelessness Strategy.

Within all this growth activity the day-to-day services must continue and once again we found the need for support had never been higher at St Pat's. Hence, slowly throughout the year we found the need to identify and appoint a substantial number of new staff at both management and operational levels.

Such growth introduces other tensions as old and new learn to work together. Typically, existing management have worked tirelessly to ensure the great cohesion of St Pat's is secure and functioning.

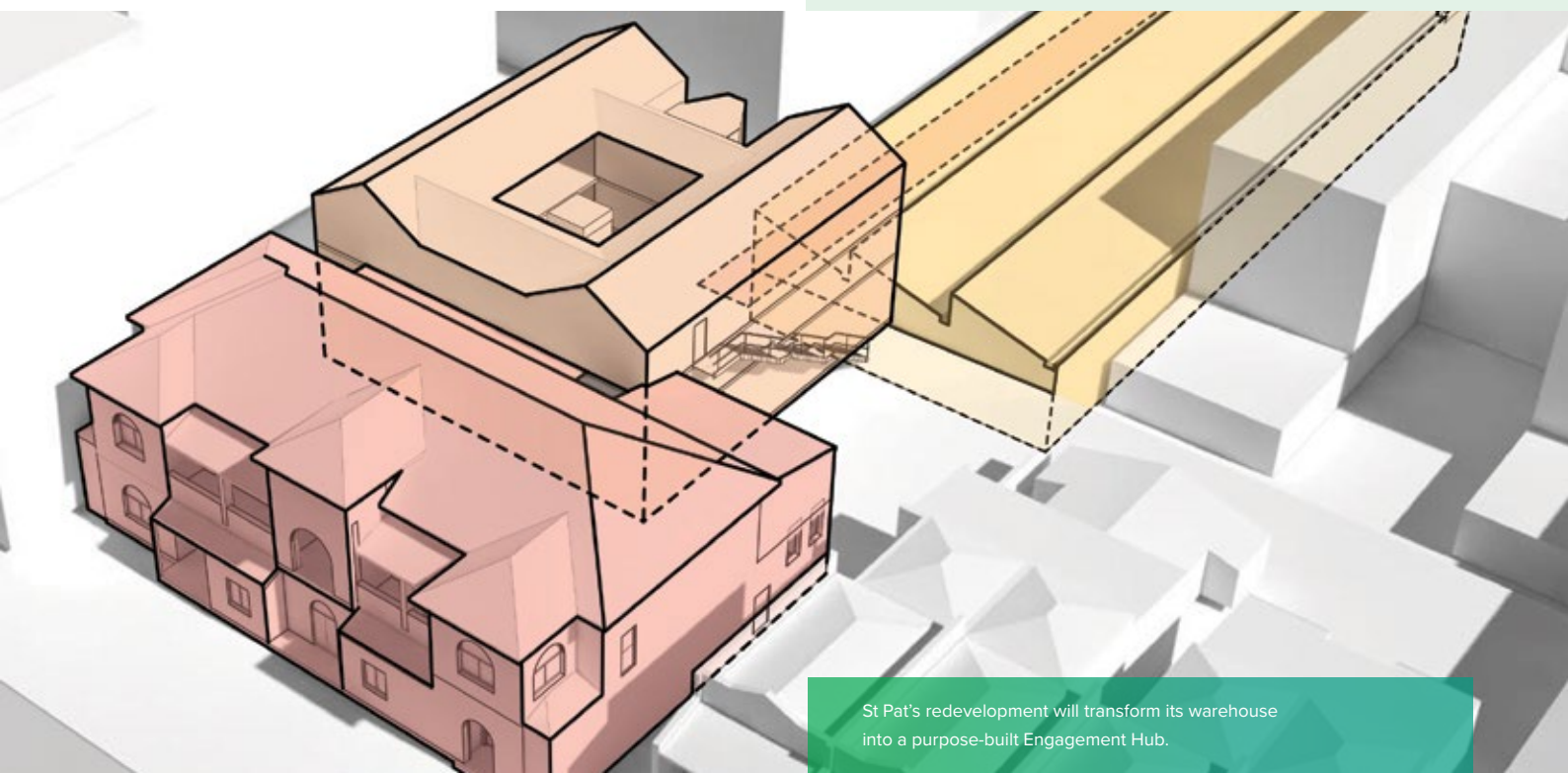
This cohesion is no accident, as the driving ethos of St Pat's is steadfastly underpinned by the charitable and caring charism of the Missionary Oblates of Mary Immaculate. Which brings me to offer a farewell to our Board President. Father John Sebastian. Fr. John has been our spiritual and constructive leader and we wish him well at his new Parish in South Australia.

So, as we farewell an outstanding year I thank everyone who contributed to our success and hope you will all be still alongside as we get another exciting year underway in 2024.

Board Members

We wish to thank the following Board Members for their professionalism, contributions, and support throughout 2022-2023.

- **Fr John Sebastian OMI**
President (Parish Priest)
- **Dr Patrick Colgan AM**
Chairperson
- **David McLean**
Board Member
- **Danielle Cattalini**
Board Member
- **Lisa Yensch**
Board member
- **Emily Townsend**
Board Member



St Pat's redevelopment will transform its warehouse into a purpose-built Engagement Hub.



St Pat's Aboriginal Services Manager Pauline Boscato, Housing Services manager Julia MacDonald, Support Services Manager Kim Rawson and our Engagement and Inclusion Manager Tania Payne toting copies of our story.

50 Years of St Pat's

It's perhaps unlikely that a young Ignatius Hannick, growing up in Ballina, Ireland in the 1930's, ever imagined he would end up living on the other side of the globe, and go on to establish a leading support organisation for people experiencing homelessness.

In 1972, Brother Hannick was concerned by the number of people in need visiting St Patrick's Basilica in Fremantle and began distributing sandwiches and soup from the verandah of the Presbytery.

Fifty years later St Pat's provides a comprehensive range of services to help break the cycle of poverty and disadvantage.

In November, we took the opportunity to celebrate our achievements, and how far we've come, with a small, intimate celebration.

It was a wonderful opportunity to give our thanks and heartfelt appreciation for our caring community which has supported us along the way.

It was impossible to do justice to everything that's happened in the past century, or to acknowledge the contribution of all those who have made St Pat's what it is today. Instead, we gathered a collection of conversations with people who agreed to share their personal connection with St Pat's, and what it means to them, in their own words.

A selection of these stories are available on our website at stpats.com.au



Guests gathered at the hall of St Patrick's Basilica, the first home of St Pat's.



Interviews with staff and volunteers from across our 50 year history were collected into a limited edition booklet.



Our CEO Michael Piu, Board President Father John Sebastian, Archbishop of Perth Timothy Costelloe SDB and St Pat's Board Chair Dr Pat Colgan cut the cake at our 50th Anniversary celebration.



Brother Ignatius Hannick



Our People



Lyn Levy
Corporate Services Manager

St Pat's workforce grew by 30% during this reporting period and this growth, coupled with a challenging service delivery environment and increasing demand for support, prompted us to make a strategic investment in our workforce.

St Pat's organisation-wide Culture and People development program is a three-year project which consists of targeted workshops as well as individual support for our senior leadership team and future leaders.

With a mix of one-on-one coaching sessions, team workshops, focus groups, team-leader and frontline staff culture sessions, as well as learning labs, the program provides a comprehensive approach that bolsters our commitment to creating a resilient, agile and capable team that can continue delivering high-quality services and positive outcomes to the people we support.

In addition to this work, St Pat's full contingent meets four times a year off-site to share our successes and challenges, keep updated on new initiatives and to strengthen ties and cooperation across the organisation.



The St Pat's team at an All-Stay Away Day in Fremantle.

92

Total staff

45

Part time & casual staff

47

Full time staff

77%

Staff identify as women

11

Staff identify as Aboriginal and Torres Strait Islander

120

Total number of active volunteers



Our Youth Place team out and about in Fremantle. (L-R Annie Kennedy, Team Leader Amy Haigh and Youth Future's Madison Merrett)



Property and Assets Manager Chris Stent catching up with HEART's Hush Mohammed at an All-Staff Away Day



Day Centre volunteer Georgie celebrating International Women's Day.

Our Volunteers

St Pat's is grateful to have a strong volunteer and student program that supports our capacity to deliver services on a daily basis.

Whether volunteering in our Op Shop's, kitchen, helping on the concierge desk, supporting events, picking up fresh produce for distribution or providing professional allied health services in our Health Clinic, volunteers play a vital role in our mission to provide essential services to those in need.

These dedicated individuals generously contribute their time, energy and skills and bring a wealth of experience and compassion to their roles.

Our volunteers come from a diverse range of backgrounds, including a growing number of people with lived experience of homelessness who are helping us broaden our reach and better-connect with people in our community who need our support.

Their selfless commitment reflects the spirit of community and solidarity that defines St Pat's and we are immensely grateful for their invaluable contributions.



The team from Fremantle Bridge Alliance helped pull our warehouse into ship-shape as part of a Corporate Volunteering day.



Community Store volunteer Carole makes sure people get the items they need when they drop in for help.



Vollie Greg is a favourite among both staff and clients for his helpful attitude.



Our team prepared Michael's nomination in secret, so he was very surprised when he found out he was a finalist!



Awards

Our CEO Michael Piu's tireless work within the community services sector was recognized at the 2022 IPAA WA Excellence awards, where he won Leader of the Year in the Not-for-Profit Sector.

We were so proud to see Michael receive recognition for the work he does not just in our community, but for people experiencing homelessness across Western Australia.

2022-2023 Finalists

We were also proud to be recognized as finalists in the 2022 Business News Rise Awards, as well as the 2023 Community Services Excellence Awards.

2022 HESTA Awards Winner

St Pat's earned its first national gong at the 2022 HESTA Awards in November, taking home the top prize for Outstanding Community Services Organisation. It was a privilege for our team to be represented alongside so many wonderful organisations from across the country.



St Pat's COO Traci Cascioli and CEO Michael Piu at the HESTA Awards.

2023 By the Numbers

Responding to the increased demand we have seen through all our programs this year, our staff have been working incredibly hard, with great empathy, determination and a 'can-do attitude' that has always been the St Pats way.





Our Starlight Hotel Choir meets at the Community Centre twice a week for rehearsals and songwriting sessions.

St Pat's Community Centre

St Pat's Community Centre is the heart of St Pat's and plays a vital role in community engagement and inclusion.

Located in Fremantle, it provides a warm, welcoming environment where people at risk of, or experiencing homelessness, can access holistic, integrated supports.



The Community Centre allows us to connect with people who may be at risk, or experiencing, homelessness.

Our new concierge



Tania Payne
Engagement and Inclusion Manager

The introduction of the Concierge position at St. Patrick's Community Centre has had a positive impact on the services provided and the overall efficiency of the centre.

Created through a short-term project funded by the Department of Health, the role is pivotal in improving the overall experience and support for individuals visiting the centre, particularly those who are new to the facility.

St Pat's new concierge is welcoming, dynamic, and possesses experience in engaging with individuals experiencing homelessness. The position has enhanced client support, boosted data-collection and accuracy, streamlined coordination of health and other appointments and reduced incidences of clients having to repeat their stories, supporting a trauma-informed approach to person-centred care.



Highlights

July 2022 to June 2023



Community Forum

As part of Antipoverty Week, we co-hosted a free Housing and Homelessness Forum in October with Fremantle Shipping News.

We had a full house of people from across the community eager to listen and learn from people with lived experience, our frontline team and their fellow experts David Pearson, Executive Director of the Australian Alliance to End Homelessness and Prof Paul Flatau, Director of the Centre for Social Impact at the University of Western Australia.



Aboriginal Justice Open Days

Our Community Centre was proud to host Fremantle's Aboriginal Justice Open Days in June.

This one stop shop provided people support to acquire identification, address fines (including work and personal development permit sponsors) driver's licences and tax, superannuation business.

Without ID, everything from opening a bank account, finding a place to live and owning a mobile phone is extremely difficult.



Digital Inclusion

St Pat's is one of 26 partners in the WACOSS WA Digital Inclusion Project, sponsored by Lotterywest, to build the digital capability of front-line community services workers and the people they support.



Dental Visit

Breakfast Champions Kirste & Dan from 98five dropped by our Day Centre to talk to our hard-working volunteers and check out some of our services, including our dental clinic.

(We think Kirste enjoyed the experience more than Dan!) Along with their loyal listeners they've been working hard to support us through 98.5fm's Heart for the Homeless campaign, which raises much-needed supplies including tracksuits, sleeping bags and other items for St Pat's.



Need help from St Pat's?

New look, same address

St Pat's unveiled a new website in May, with an easier to navigate layout and updated accessibility function to better connect people with the services we provide.

Visit stpats.com.au on your computer or mobile phone.



St Pat's Case Study

Mike's Story

Mike (not his real name) is a 50-year-old man who had fallen on hard times after being laid off from his job.

Struggling to manage his bills, he ended up sleeping rough for the first time. Frightened and alone, Mike's mental health quickly deteriorated and he made some poor choices which led to him being charged with a minor offense.

Feeling overwhelmed, Mike learnt about St Pat's Community Centre and came in for help. He wasn't on Centrelink, which ordinarily would make him ineligible for many services and supports. However, St Pat's Emergency Relief team were able to connect him with crisis accommodation and Street Law. They assisted Mike in attending his court appearance and in applying for Centrelink payments, as well as linking him with Jacaranda Financial Counselling to manage his new budget.

With the help of St Pat's Day Centre team, Mike's stress levels lowered and his motivation rose. He found a new job with accommodation and was able to come off social services payments.

Mike is now in a much better place and has even asked how he can donate to St Pat's to help other people like him get back on their feet.



Support Services Manager Kim Rawson (left) with the HASP team's

St Pat's Support Services



Kim Rawson
Support Services Manager

I take immense pride in the development of our Support Services department throughout the past year. Our team has navigated numerous changes, including new programs and locations, and welcomed many new staff members on board.

St Pat's experienced outreach and case workers provide intensive and ongoing support to people experiencing homelessness.

Primarily covering the south metropolitan region, from Fremantle through to Rockingham and Mandurah, we are also the lead agency - and work in collaboration with other organisations - of programs across Perth.

It has been a pleasure for me to watch everyone grow into their roles as sector leaders for outreach services and local government collaboration, and I am so proud of my team and all that we do.

Considering the multitude of Support Services remarkable accomplishments, selecting a single achievement is an impossible task. But I've been told I need to be brief, so here is a few highlights:

Street to Home and Palmerston collaboration

St Pats and Palmerston have been trialling a partnership to provide opportunistic alcohol and drug dependency (AOD) counselling to clients experiencing chronic rough sleeping.

This partnership has added a much-needed AOD outreach worker/ counsellor to the Street to Home Assertive Outreach team.

The worker provides brief intervention, individualised harm minimisation strategies, AOD crisis management, relapse prevention and ongoing counselling.

This collaboration has been instrumental in streamlining clients into inpatient detox with coordinated entry into residential rehabilitation and accessing pharmacotherapy treatments.



HEART Consortium Collaboration

The HEART consortium has lived up to its name, evolving rapidly to become the preeminent outreach program in Perth metropolitan region. Establishing and maintaining strong partnership relationships with organisations like Uniting WA, Wungening Aboriginal Cooperation and Indigo Junction has been pivotal. The persistent, adaptable, and continuous support provided by our workers to some of our community's most vulnerable has had a profoundly positive impact.

Kwinana Outreach Support

St Pat's will partner with the City of Kwinana to provide an assertive outreach service to support people experiencing homelessness.

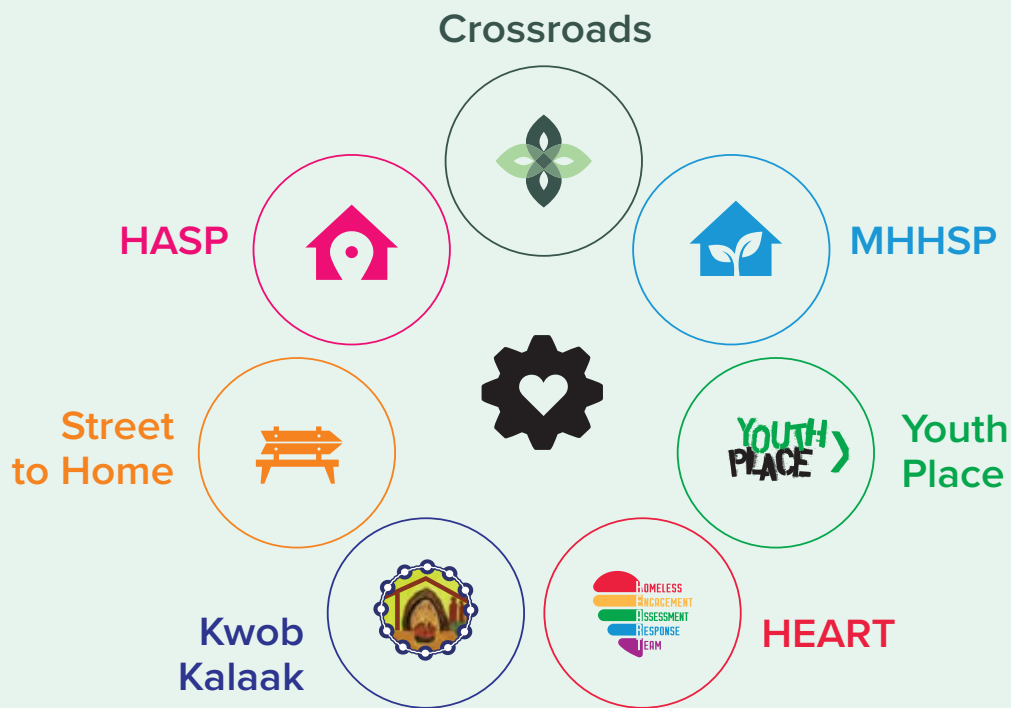
Announced in June 2023, two Assertive Outreach Workers will be appointed to work with the HEART consortium, led by St Pat's, to deliver targeted, flexible support for people in the Kwinana region.

Housing Accommodation Support Program Case Study

The Housing and Accommodation Support Program was launched in October 2022 and includes a team leader and five support workers, including a Housing First Homelessness Initiative Assertive Caseworker.

The HASP team works closely with St Pat's Housing Services team to support clients to sustain their residencies, as well as facilitating additional support with specialist services.

HASP also collaborates with the Department of Communities, applying their combined wealth of experience and knowledge to help people secure long-term housing.



Crossroads

The Crossroads program provides support for people experiencing drug and alcohol dependency while facing homelessness in the Fremantle, Perth CBD and Rockingham local government areas.

MHHSP

The Mental Health Housing Support Program helps people transitioning from tertiary mental health facilities in Fremantle and Rockingham.

Youth Place

Our Youth Place program assists young people aged 15 to 25 facing homelessness with housing and ongoing case management.

HEART

The Homeless Engagement Assessment Response Team is a rapid, intensive assertive outreach service which responds to rough sleeping hotspots across metropolitan Perth.

Kwob Kaalak

Kwob Kaalak supports people experiencing homelessness in Rockingham and Mandurah through assertive outreach and Housing First case management.

Street to Home

Street to Home is an interagency, integrated support service for people experiencing rough sleeping in and around Fremantle.

HASP

The Housing Accommodation Support Program assists people exiting homelessness in sustaining their new residencies.



Katie's Story

Katie (not her real name) was referred to HASP about six months ago, where she presented with significant mental and physical health challenges, including dental hygiene.

Katie shared that she had a distrust of health services and a phobia of dentists, which had made seeking help difficult.

HASP worked with Katie to build her confidence and rapport with health services and referred her to a St Pat's counsellor, to provide her support. They also made an appointment with St Pat's Dental Clinic and accompanied her as the dentists listened to her needs and went through the process for her treatment step by step. They were empathetic to her situation and when it came time for her to sit in the chair, they made sure to re-assure her at every step of the process.

Katie now has a new set of dentures, allowing her to smile without embarrassment and eat healthier food. Her self-esteem has also noticeably improved and it has also helped with her speech and ability communicate.

'I am so happy, I can now eat different foods' - Katie.

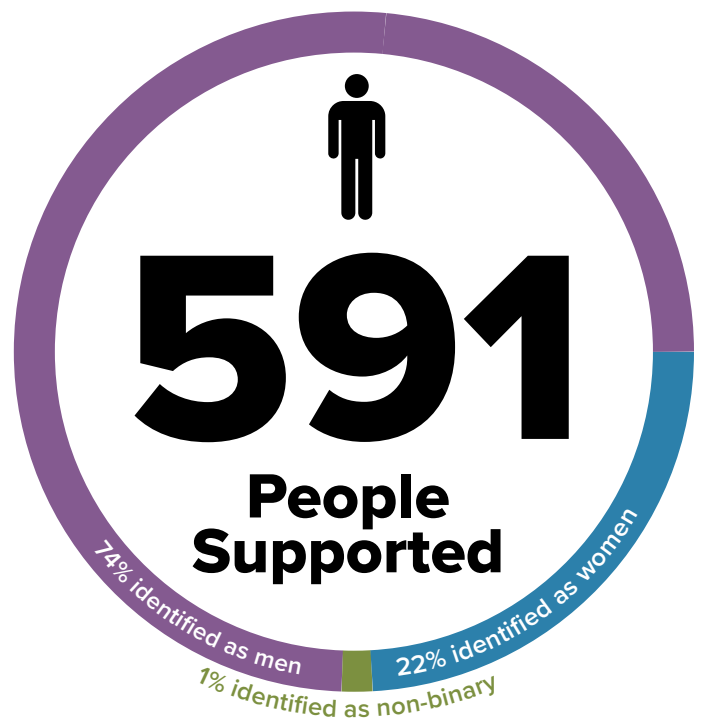


St Pat's Housing



Julia MacDonald
Housing Services Manager

It's been a big year for St Pat's Housing Services. With the completion of the "My Home" Project we added 18 units to our portfolio and, working with the Support Services team, assisted women over 55 experiencing homelessness into their newly-built long-term homes.





18 women over 55 moved into the new "My Home" properties in June.

St Pat's has more new homes on the horizon, after we were successful in our bid for \$1.6 million in funding under the Social Housing Economic Recovery Package (SHERP) to build 8, 2-bed townhouses in Orelia.

Working with builders, Nicheliving, these townhouses are expected to be completed before 2025 and once built will provide safe, secure and appropriate homes for families and couples impacted by homelessness, under a Housing First approach. The homes cannot be built quickly enough with the need for housing higher now than ever before, and families in crisis calling into our services every day.

Traci Cascioli
Chief Operating Officer

Tenant Management

The project also represents a first for St Pat's in tenant management, as we became landlords for the properties. Our team had to upskill and I'm proud of the way they've handled this challenge and stepped up as leaders.

Build and Grow

St Pat's Board endorsed a new Housing Strategy in March to help us grow our housing stock and diversify our portfolio so we can better-meet the individual needs of people experiencing homelessness.



Objective 1

Increase the stock of housing



Objective 2

Build a diversity of housing types to meet different cohort needs



Objective 3

Develop operational capacity, capability, and systems



St Pat's CEO Michael Piu with "My Home" Founder and Architect Michelle Blakeley and the Minderoo Foundations Director, Building Communities, Louise Olney

My Home

St Pat's received the keys for 18 new homes for older women experiencing homelessness in the Fremantle area on June 12th.

Representing the first housing project for philanthropic developer "My Home" Australasia, the innovative construction of these cost-efficient, long-term homes was funded by Lotterywest, the Minderoo Foundation and the Sisters of St John of God.

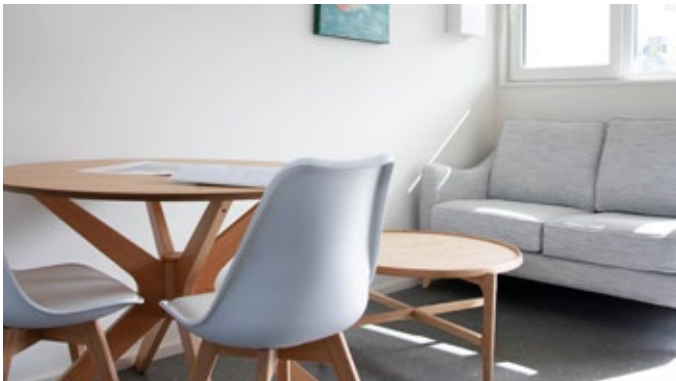
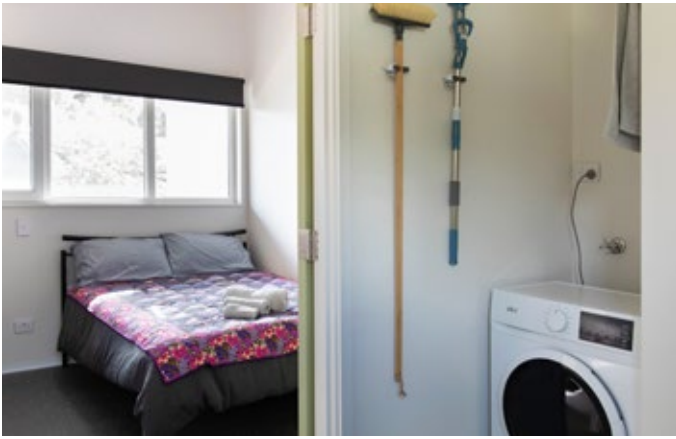
St Pat's was proud to partner with "My Home" on this project, which was made possible thanks to a whole-of-community effort, including contributions from government, non-government organisations, local businesses and community groups.

Close to public transport in North Fremantle, the properties have been built on government land reserves using prefabricated panels, allowing most of the construction to take place off-site, and come fully furnished and landscaped, ready for residents to move in.

Due to this process, the construction phase only took 9 months.

The high-performance, long-term homes, which incorporate Passivhaus principles in their design and include solar panels and rainwater tanks to maximize energy efficiency, represent the first project for "My Home" Australasia and demonstrate how the Private Public Partnership model can speed up the process of building social housing.





The properties were fully furnished thanks to community groups including Rotary WA, the Soroptimists Fremantle and the Catholic Women's League.



City of Fremantle Mayor Hannah Fitzhardinge at the opening of the new properties in June.



Aboriginal Services Lived Experience Peer Navigator Brett Goring uses his experience of homelessness to help drive better outcomes for other people in our community.

Aboriginal Services



Pauline Boscato
Aboriginal Services Manager

I was brought on board as Aboriginal Services Manager at St Pat's in late 2022. A new position, it came about due to a special bequest gifted by the estate of Sonya Rodgers, to develop a specialist support service for Aboriginal people experiencing homelessness.

It has been a privilege to work with our local Elders, St Pat's staff and the senior leadership team to build a new trauma-informed, culturally safe service from the ground up.

St Pat's Aboriginal Services, which will hold its official launch in October 2023, has hit the ground running, providing assertive outreach, peer-navigation and culturally safe health connection in the south metropolitan region of Perth.

I am incredibly proud of my team who have already made a significant impact on their St Pat's colleagues, the people they support and our community.

Together, we have created a trauma informed, mob-centred service, where dignity, respect and compassion are practiced. It is a place where people can go and sit in safety to tell their story without biased. The team sits with, yarns and guides our mob, through their journey out of homelessness to a path to a safer place.

For Our Elders

St Pats is very excited and humbled to have the opportunity to work and learn from our local Elders, in our new Aboriginal Elders Advisory Group which has been established to guide and inform the implementation of St Pats new Aboriginal Services Program.

Consisting of up to six generous local Noongar Elders and their proxies, the group has been meeting bi-monthly with St Pats leaders, to establish a name, help guide recruitment and impart cultural wisdom, so that we can be assured that our services will be as culturally safe and appropriate for our First Nations clients as possible.

Traci Cascioli
Chief Operating Officer



Returning to Country

In April, Aboriginal Services Peer Navigators met a Larrakia woman named June, who had been sleeping rough in the South Beach dunes for about three months.

Hailing from the Northern Territory, June and her partner had travelled to WA before splitting up, leaving her on her own.

The Peer Navigators invited June to St Pat's Day Centre for a meal and showers. June revealed she hadn't been in contact with her family since Christmas, and that her greatest wish was to return home.

Our Peer Navigators supported June in contacting her family and then began collecting the information to process her Return-to-Country application.

Within two days, June flew home and was reunited with her family, who believed they'd never see their sister again. Our Peer Navigators were also able to connect June to local health providers in Darwin, to help her address some outstanding health concerns.

Speaking to June a few days after she got home, she was overcome with emotion and said she was unable to communicate her relief and happiness to be back on country.

"The time I spent with Aboriginal Support Services was the safest I had felt in months," June said.





Imagined Futures



Leigh Sinclair
Executive Officer

St Pat's auspices the Imagined Futures collective impact group, which brings together more than 70 government (federal, state and local), not-for-profits, businesses, philanthropists and community members to address complex social issues in the local government areas of Cockburn, Fremantle, and Melville, with a focus on early intervention.

In what was another very difficult year for the community, the Imagined Futures partnership galvanised their efforts to work together to fill gaps, maximise resources and seize upon the many strengths that exist in our community. If I had to choose one theme that stood out for me, it would be the partnership's work to build capacity of community members to support themselves and others.

It is humbling to reflect on how much has been achieved on what is a very modest additional financial investment. It is a true testament to each of our partners.

To read more about these projects head to www.imaginedfutures.org.au



Collective Impact

Mental Health Training:

418 Community Members

Leadership and Resilience Training:

77 School Students

Depression and Anxiety Treatment Training:

33 GPs

Connecting to family, culture, and community:

30 Aboriginal children in care

Education Workshops at Davis Park:

53 residents

Where is the Door?

Connecting our community to the right support, at the right place, at the right time.

Youth

Contributing to improvements in engagement in school, social-emotional resilience and overall wellbeing for students.

Community

Partnering with the David Park residents to build social connection and foster a safer, more liveable community.

Housing & Homelessness

Supporting the state government's 10 Year Strategy on Homelessness 2020-2030 with place-based interventions.

Mental Health

Implementing a model proven to improve the treatment and care of people affected by depression.

Working with the community, for the community

Imagined Future's working groups model is a strategic activation to deliver outcomes with deeper and sustained change. Through these working projects, we are testing what can happen when we pool collective resources, stepping outside of traditional approaches to community support. Our collective impact projects have been established to focus on five priority areas.



St Pat's Community Store

Our Community Store has continued to grow, providing an extended range of services and returning dignity and choice to people experiencing homelessness and on low incomes.

The Community Store model, supported by the Minderoo Foundation, returns dignity and choice to people exiting homelessness.

Working closely with St Pat's Support Services, and with the support of our wonderful donor community, the Community Store provides most of the basic furniture, homewares and essential

items people need when exiting homelessness and into lodging or housing, including crockery, utensils, cookware, laundry packs and more.

Giving people a choice in how they furnish their properties, and providing items beyond the practical necessities, is the difference between people moving into a house or a home.

For the community, by the community

The St Pat's Community Store plays a key role in supporting our programs and clients with clothing, household goods and furniture-keeping people warm in winter, cool in summer and equipped with useful, comfortable and pretty items for their new homes.

Traci Cascioli
Chief Operating Officer



We were proud to host a fashion show at Fremantle Ports' Maritime Day 2022.

St Pat's Op Shop

St Pat's Op Shop opened a new studio upstairs at our High Street store in 2022, offering good-quality vintage and retro fashion and accessories.

The fast fashion industry has a devastating impact on our environment, and it's important to St Pat's that we model sustainability practices and support our local circular economy.

With more than 70 active volunteers across our Community Store, Op Shop and Warehouse, our vologies range from school students to retirees and some people have been with St Pat's for years, helping to build a wonderful, supportive community of people who I'm proud to work with every day.

The proceeds from our Op Shop goes back into St Pat's to support our services and programs. The shop, and its social media accounts, also connect St Pat's with vulnerable young people who may be needing our help but are unaware of what services and supports are available in their area.



Tina Bill
Op Shop Manager



When a spike in demand led to a shortage of non-perishable food supplies as we headed into winter, our community rallied behind us.

Community in Action

In April 2023, intense demand meant St Pat's kitchen cupboards were bare and we were desperately low on warm clothing and other supplies as we headed into winter, so we put a call out on our social media to anyone who might be able to spare a tin of tomatoes or other non-perishable foods.

The response from our community was overwhelming, with donations pouring in from people across Perth.

Thanks to everyone's generosity, we had enough non-perishable food left to prepare hundreds of extra meals as we headed into the FY24.

Along with the return of our annual supporter event, which featured special guest speaker David Pearson, Chief Executive Officer of the Australian Alliance Against Homelessness, we celebrated another successful Fremantle Long Table Dinner, raising more than \$100,000 thanks to the support of our generous sponsors, donors and event partners The National Hotel.

Donors

Thank you to our partners and donors.

Organisations Supporters and Donors

98five Sonshine FM
Allens Philanthropy Committee
Association of Financial Advisers
ATCO Epic
AussieOS
Bahai of Fremantle
and East Fremantle
Bunnings Group
Busy Bees Childcare
Bux Family Charitable Trust
CBC Fremantle
Civmec
Clancy's Fish Pub
The Congregation of the
Presentation Sisters WA Inc
Corpus Christi
CWA Fremantle and Melville DP
World
Emmanuel College EntireTech
Eureka Nominees
Fremantle College
Fremantle Ports
Fremantle Sailing Club
Freo Fins
Gilmac
Goodwill Association of WA Inc
Henry Schein
Iona Presentation College
John Curtin College of the Arts
John Hughes
John Paul College
John Paul College
Leeming Senior High School
Lions Club of Fremantle
Lions Club of Jandakot
Lions Club of South Perth
Mazenod College
Mel Maria Primary School
Melville Primary School
Mint Real Estate
Penrhos College
PLC Lighthouse
Presentation Sisters
Richard Lockwood
Charitable Foundation
Rosalie Primary School
Rotary Cllub of Booragoon
Rotary Club of Fremantle
Santa Maria College
SEA CORPORATION
Seton Catholic College
Soroptimists Fremantle
Spinifex Trust
St Emilies Primary School

St Patrick's Primary School
The Perth Waldolf School
The University of Notre Dame
WA Trade Ball
White Gum Valley Primary School
Willetton Senior High School
WJ and MS Hughes Foundation
White House Property Partners

Individuals Donors over \$500

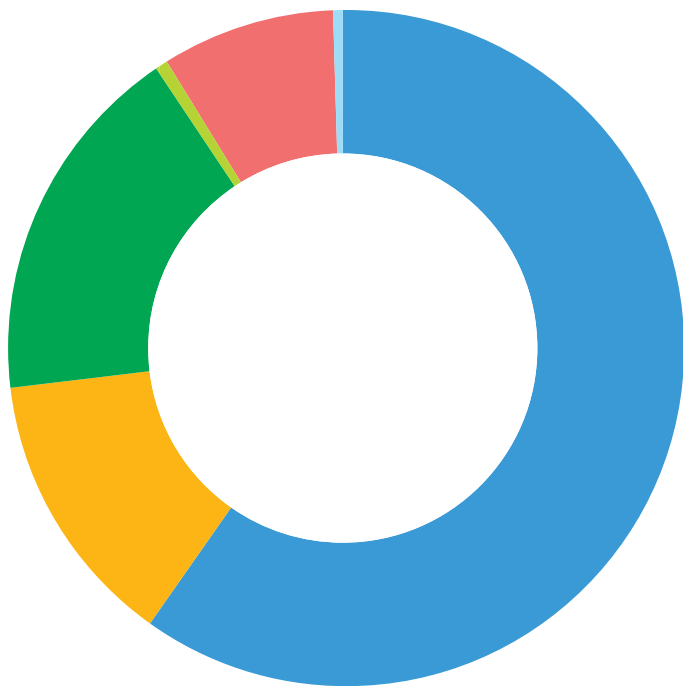
Alex Morse
Alicia Massarotto
Alicia Robinson
Alistair Cowden
Amber Fresh
Andrew Tandy
Ann Meyer
Annette Brown
Anthony Balint
Bradley McLeod
Bux Family Trust
Catherine Carr
Chia Ooi
Chris Constantine
Chris Theunissen
Christine Loundes
Christopher Piggott
Claudio De Felice
Dale Broxton
Dan Pagoda
Danielle Cattalini
David Reed
Dean Zile
Debbie McCarthy
Deborah Rae
Diane Hart
Diane Meakins
Dianne Rees
Elaine Lucivero
Elena Monaco
Eureka Legacy
Franca Sala Tenna
Frank Zanetti
G Catalano
Garry Yovich
Gary & Jan Ryan
George Roberts
Gerard Wong
Helen and Graham Pearse
Helen Brady
James Gill
James Litis
Janny Kaptein
Jennifer Healey
John Auer

Josh Wilson
Julia Brown
Julie Gibbs
Karl Bullers
Kim Isaac
Klara Andric MLC
Laura Fitzgerald
Layla Langridge
Leonie Scott
Linda Auer
Loralie Rueda
Maggie Armstrong
Margie Tannock
Marion Tapper
Mark Bianchini
Mark Elphinston
Mary Callan
Mary Kay Smith
Matt Jessup
Michael Allen
Michael Beech
Michelle Shepherd
Monica McTaggart
Nick De Felice
Nigel Desebrock
Pamela Allen
Paul Bailey
Paul Norman
Peter and Colleen O'Leary
Peter D'Alessandro
Peter O'Leary
Philip Cutter
Philip Winten
Ralph Treasure
Ray Steffanoni
Rebecca Cutter
Rob Johnston
Robert Cockburn
Robert Guthrie
Roy Perron
Ry Schulze
Scott Sargant
Sophie Clough
Spinifex Trust
St Pat's Staff
Stephen Harler
Steven Panton
Susan Gale
Tamara Anastasakis
Tessa La Mela
The Trustee for Kimbar Trust
Thomas O'Toole
Tim Winton
Trina Glover
Wendy Gill
Jean Genie

Program Partners and Funders

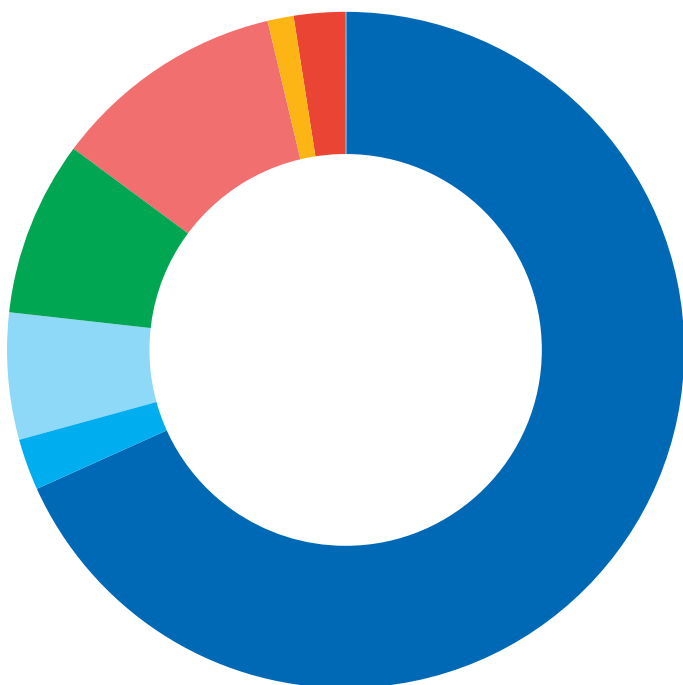
Australian Dental Health
Foundation / Australian
Dental Association
Blackswan Health
City of Cockburn
City of Fremantle
City of Mandurah
City of Melville
City of Rockingham
Department of Social Services
Dental Health Services
North Metropolitan Health Service
Department of Communities
WA Government
Department of Premier and Cabinet
Department of Social Services
Empowering Communities
Food Bank WA
Fremantle Foundation
Jacaranda Community Centre
Lotterywest
McCusker Citizenship
Program UWA
Mental Health Commission
Minderoo Foundation
Reclink Freo Street Games
Ruah
Shelter WA
Silver Chain group
Sisters of St John of God
Subiaco
St Vincent De Paul
Street Law Centre
Street Smart Australia
Street Smart Australia
The University of Notre Dame
United Way WA
Uniting WA
Volunteering WA
WA Police Department
WA Primary Health Alliance
Wungening WA
Youth Futures
Family of Sonya Rodgers
Optometry Association of WA
Murdoch University
Chiropractic Clinic
Moorditj Djena
Palmerston
Homeless Healthcare
Indigo Junction

Finances



Revenue

- 59.7% Grants
- 13.4% Fundraising, Donations and Op Shop Income
- 17.5% Lodging and Housing Income
- 0.6% Interest
- 8.3% Donated Goods
- 0.5% Other Revenue



Expenditure

- 56.4% Salary
- 2% Other staff costs
- 5% Admin
- 7% Lodging House Expenses
- 9% Donated Goods valued
- 1% Interest and Loss on Sale of Asset
- 2% Depreciation

Revenue increased by **27.8%** from FY22

St Pat's main income is derived from grant revenue, with 13.4% from donations and fundraising activities.

➤ Lodging & Housing

Lodging & Housing income refers to charges to residents, with all funds returned to cover property management, maintenance, rates & utility costs.

➤ Donated Goods

Donated goods is the estimated value of goods donated to St Pat's for distribution to people experiencing homelessness or resale through our Op Shops.

➤ Staff

Working to end chronic homelessness is dependent on a dedicated professional team, and so it follows that majority of expenditure is on our people – including an increasing number of staff with lived experience of homelessness.

Investing in our people, processes and systems to deliver successful outcomes, which will hopefully provide opportunities for future funding as well as aligning our service delivery & processes with the WA Governments 10-Year Homelessness Strategy.

Revenue

Revenue increased by 27.8% from the previous year, noting higher grants, an increase in Lodging & Housing and a particularly good performance in fundraising and donations.

Expenditure

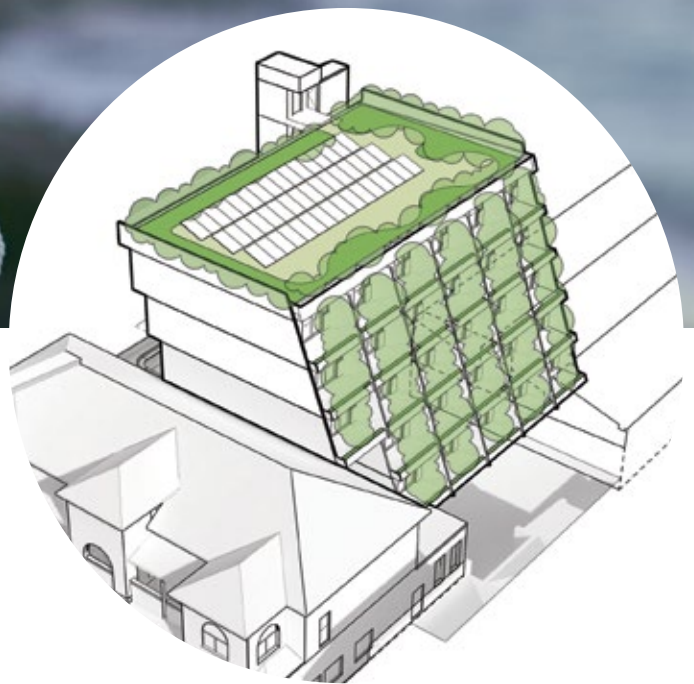
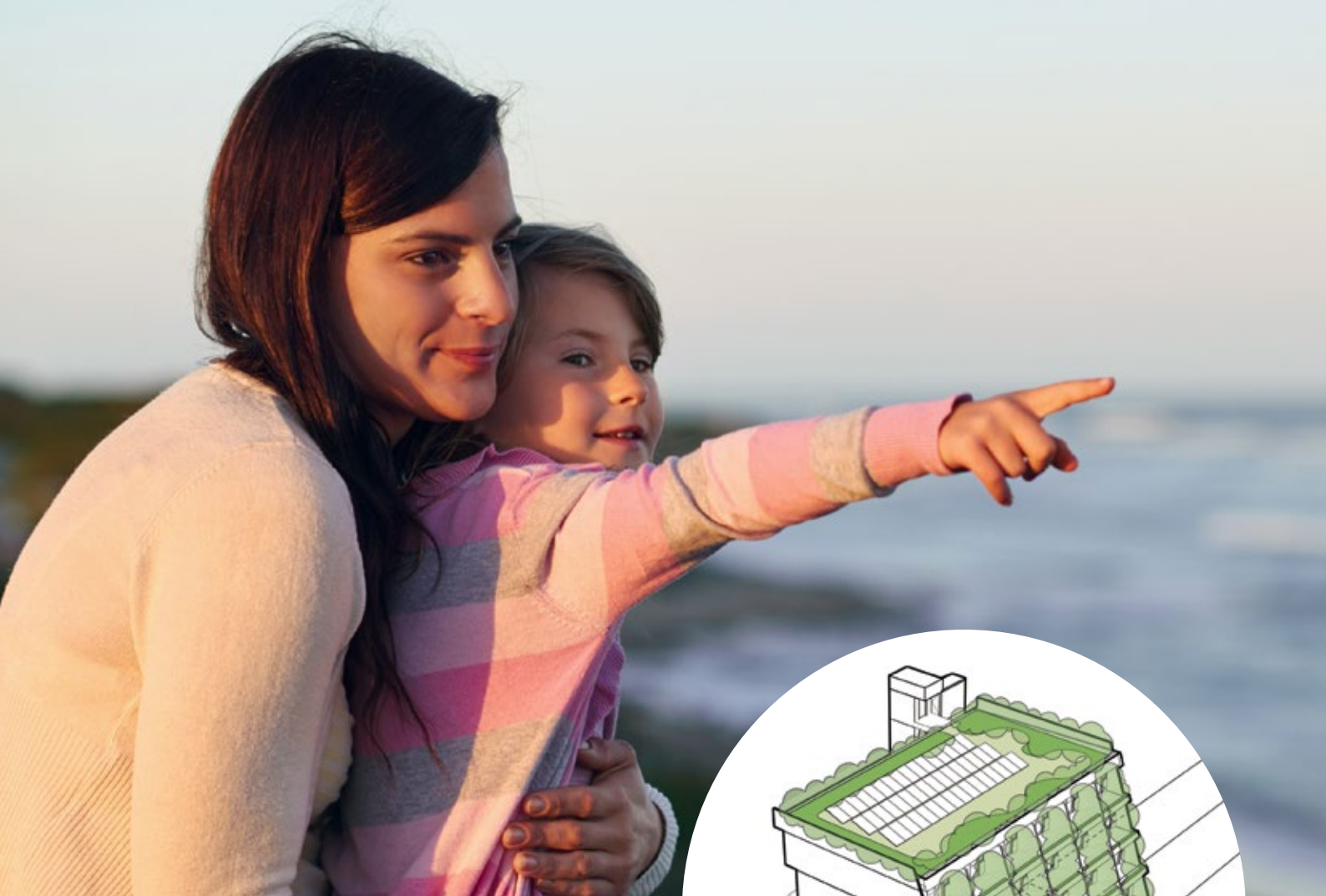
Expenditure increased 18.4% due to meet increased staffing needs.

St Pat's performance over the past financial year was good and the finance team are currently working through a range of improvements including improved controls & risk mitigation, reporting & analysis, training & development, building relationships & supporting our colleagues.

On top of that we are currently engaged in reviewing new financial systems to provide improved efficiencies, so we can work more effectively as well as providing benefits to the organisation.



Gary Oliver
Financial Controller



Looking Forward

In late 2022, St Pat's received planning approval to transform our current owned or managed properties in Queen Victoria Street and Beach Street Fremantle into purpose-built facilities and 28 homes for people experiencing homelessness.

In the first half of FY23, St Pat's had already secured more than 40% of the \$22 million in funding needed for this ambitious project, which will make better use of our properties, build more homes, expand our services and increase our capacity, so that we can meet our ultimate goal of ending chronic homelessness in our community.

To stay up to date with this exciting project, head to our website: stpats.com.au/redevelopment



