

---

DECEMBER 2025

# Impact Matters



Discover the difference your support makes to people facing homelessness, poverty or disadvantage.

---

## Thanks to you, families like Sharon's don't have to face homelessness alone.



Karen from the HEART Team shares a cup of tea with Sharon in her new home.

Last Christmas, Sharon\* and her two children found themselves without a safe place to go.

A rent increase forced them out of their home. They were then taken in by another family member, who unfortunately died.

When they ran out of options they ended up sleeping in a makeshift home - a tent under a bridge.

'We had all our belongings with us and nobody to turn to who could help us with a place to live. I wanted to keep my children in school and there weren't any housing options available. I didn't know what else to do, so I just did the best I could.'

*\*Sharon's name has been changed to protect her identity.*



The image of Sharon's family's tent and belongings under a bridge was taken by a visiting St Pat's Outreach Team.

It then became the stark real life inspiration for this year's Winter Appeal.

Karen from St Pat's Homeless Engagement Assessment Response (HEART) Team said 'it's quite unbelievable that families and children in WA are being forced into homelessness - but they are. You won't see them sleeping rough in town centres. Parents want to protect their kids and keep their families together, so we often visit them at bush campsites, in overcrowded housing or living in cars.'

Karen worked alongside Sharon and the kids, providing case management and support to find a path forward.

Despite all the challenges they faced, Sharon managed to keep her kids in school and always made sure they had home-cooked meals. She even provided meals for other people who were sleeping rough.

Over the months that followed, they worked together to secure a suitable safe and stable home for her family.

Fortunately, this year, Sharon and her children will be celebrating Christmas in the safety of their new home. They're looking forward to putting up their tree and sharing Christmas lunch together.

Thanks to the generosity of supporters like you, families like Sharon's don't have to face homelessness alone.



Sharon's children no longer have to dream of a safe place to call home.

**This Christmas,  
give more  
than a meal.**

**Give the Gift  
of Belonging.**



**Donate Now**



**As Christmas approaches, many of us look forward to gathering with loved ones, sharing meals, and enjoying the comfort of home.**

For families and individuals facing homelessness, this season can feel isolating and painful, a reminder of what's missing.

This Christmas, you can help bring back a sense of belonging for someone who's doing it tough. Because everyone deserves to feel safe, valued, and connected.

As well as continuing to provide our usual support services, Christmas is a time when our teams of dedicated staff and volunteers go above and beyond and make sure everyone gets to share in some Christmas cheer.



**You can help someone feel like they belong this Christmas by visiting the [2025 Christmas Appeal here.](#)**

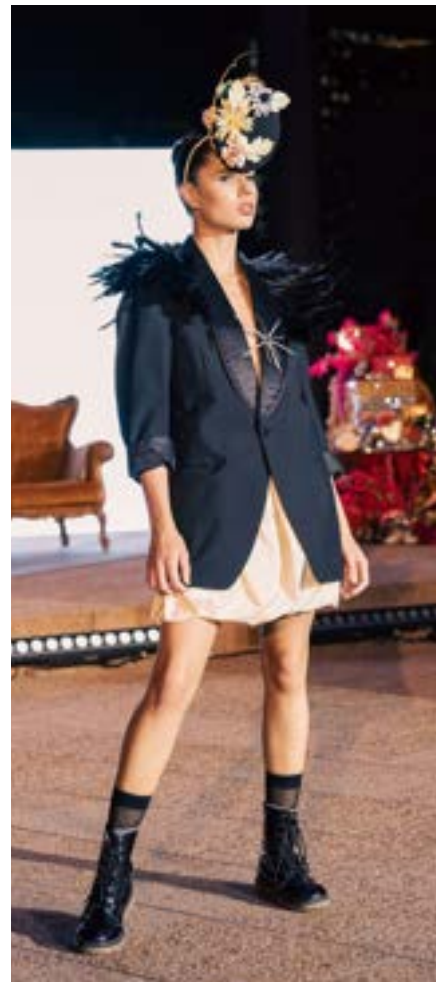


## From Curtains to Couture

If you're looking for a unique gift this Christmas then head on down to St Pat's High Street Op Shop.

St Pat's Repatched is a sustainable, upcycled fashion line for fashion with purpose. Created from surplus material donations like curtains and lace table cloths, each item is lovingly hand-made by our extremely talented volunteer sewing group. Every creation reduces landfill, creates a unique piece of clothing and all profits help end homelessness.

Tina from the Op Shop recently joined the best and boldest designers at the Circular Fashion Festival in Perth to showcase the stunning pieces.



Repatched at the Circular Fashion Festival.  
Photo credit: Mehrdad Photography



Interested in volunteering?  
We'd love to have you on board — [find out how you can get involved here](#)

# St Pat's People



**Meet Lance, Team Leader  
Djenabidet Kalleep/Footpath Home**

**“Working at St Pat’s is just different, because you’re not just doing a job, you’re helping people who really need support.**

**You get to build real connection with the clients, and it makes you feel like you’re actually doing something that matters”**

## **Tell us about a typical day in your role**

My day can involve going out to check on clients [Outreach], having yarns with them, helping my team with challenging cases, and working with other teams and services to make sure the support provided is culturally safe. I also advocate for Aboriginal clients to ensure their needs are respected. Each day brings something new, but the focus is always on helping our clients and building trust.

## **What’s the most rewarding part?**

Working alongside my team and all the other teams at St Pat’s. Everyone does such an amazing job helping our clients get the support they need — whether it’s finding a place to live, health services, or reconnecting with family.

## **How does your cultural background influence the way you connect with and support First Nations clients?**

I know how important family, community, and culture are, and I try to bring that into the way I work and support our clients. A lot of our mob have been through hard times, so I take the time to listen, build trust, and make sure they feel safe and respected.

Being an Aboriginal man, this role means a lot to me - both culturally and personally, so helping people who are experiencing homelessness allows me advocate for those who don’t have a voice, especially our own mob.

## What are some of the biggest challenges you see?

People living in overcrowded or unsafe homes, being treated unfairly when trying to find a place to live and dealing with family violence. It can also be hard to get healthcare because it's expensive, and sometimes mob don't feel respected or understood when they ask for help.

## What is special about the way St Pat's supports First Nations people facing homelessness?

The creation of Djenabidet Kalleep, our all-Aboriginal team - is what makes St Pat's special. Having a team led by Aboriginal people and working with our own means the support is real, it's built on understanding, respect, and lived experience.

## How has working in this space shaped your understanding of homelessness and community?

Working in this area has helped me see that homelessness is more than just not having a home. It's also about things like mental health, trauma, culture and not having the right support.

It's made me understand how important it is to listen, care, and respect our clients in ways that can make a difference.

## How can the wider community play a role in making a difference?

By learning more about the issues and listening to Aboriginal voices. Standing up against racism, supporting local Aboriginal services, and making sure everyone feels safe and welcome.

## What are your hopes for the future?

I just want to keep learning and helping where I can. Being part of Djenabidet Kalleep means I get to support our mob in a way that feels right.

I want to see our communities stay strong and proud, and I really hope the clients we work with feel safe, respected, and supported to build a better future for themselves.



Our Aboriginal Services Team, Djenabidet Kalleep, aka Footpath Home, was created thanks to a legacy gift.

If you'd like to find out more about the impacts legacy gifts can make email [Annalisa.Oxenburgh@stpats.com.au](mailto:Annalisa.Oxenburgh@stpats.com.au)





**41,760**  
Meals



**4,317**

Health and dental  
appointments

YOUR SUPPORT

**TRANSFORMED LIVES**

IN FY24-25



**2,150**

People supported



**500+**

People housed



**1,746**

ER Appointments



The amazing group of people that make up St Pat's Staff Team at a recent get-together

## Reflecting on a Year Made Possible by You

*Michael Piu, CEO*

**As we approach the end of 2025 and make our way towards Christmas, it's a time to reflect on all the progress and vital work you have made possible this year.**

At the end of 2024, St Pat's was facing an unprecedented situation — supporting 65 family groups experiencing homelessness, including 80 adults, 125 children and 6 pregnant women. This steep rise in families needing help presented significant challenges. Our system was never designed to support so many parents and children in crisis at once.

Thanks to the extraordinary generosity of The Stan Perron Charitable Foundation, we were able to respond. Their support enabled the creation of our new Family Support Program, launched in October. This program fills a critical gap in the system, offering specialised, trauma-informed support to help stabilise vulnerable families while longer-term housing solutions are found.

But as we look ahead, the reality is clear: the need is growing, and there is still so much more to do. Every week, more people are seeking help with housing, meals, health care, and connection. Many are experiencing poverty and homelessness for the first time. Your support has never been more important. It is what allows us to keep saying “yes” when someone has nowhere else to turn.

Sadly, homelessness is an increasing global issue. That’s why it was such an incredible honour to receive the THIS IS FREMANTLE Aspire Award, which will allow me to attend the National Conference on Ending Homelessness in Canada. It’s an opportunity to learn from global leaders, showcase the innovative work happening here in WA and bring back insights that will strengthen efforts to end homelessness in WA, and beyond.

You help make so many wins everyday for the people we serve — some are big and some are small. Thanks to you we’re all incredibly delighted to have won Community Service Organisation of the Year at the Fremantle Chamber of Commerce Business Awards.

This recognition belongs to our entire community:

- the staff who show up every day with compassion and courage,
- the volunteers who give their time so generously, and
- supporters like you, who make this work possible.

Together, you create the spirit of St Pat’s.

This reflects what we can achieve when a community stands alongside people facing homelessness with empathy, dignity, and belief in a brighter future. Thank you for everything you make possible.

Wishing you and your loved ones a safe, peaceful, and connected Christmas season.

Michael Piu  
**CEO, St Pat’s**



City of Fremantle CEO Glen Dougall, hands over the THIS IS FREMANTLE Aspire Award.